



<http://www.tefc.com.au>

TopEndFlyingClub@gmail.com

Ph 0457992425

LEARNING TO FLY AT THE TOP END FLYING CLUB

The Top End Flying Club is a Recreational Aviation Flight Training Facility based at MKT airport at Noonamah. We offer affordable, relaxed and personal flight training in modern Jabiru 230 aircraft. MKT airport is a quiet non-towered aerodrome which means you spend more time flying and less time waiting on the tarmac. Established in Darwin for more than twenty five years, the Top End Flying Club's flight training facility has trained many pilots over the years.

HOW DO I GET STARTED?

For students currently training or private hire customers, please use our goboko booking site. You will need us to add your email into the system so you can make bookings. Just contact Mark Christie (markc@xsymetrix.com.au) to be added.

Instructions for using goboko are at the end of this document.

You can preorder and pay for blocks of up to 5 hours and enjoy a discount rate.

In addition to flight time in the aircraft, ground school components cover aspect of basic aeronautical knowledge, human factors, radio usage and navigation. Costs for some of these ground school components will vary and will depend on number of students and availability of suitable instructors.

Bernie Wyndam is our School Chief Flying Instructor and Caleb Gotts and Steve Robinson are instructors.

When booking training slots, it is imperative that you confirm with the instructor as to their availability.

As a rule, Bernie and Caleb are potentially available on weekends and Steve is available during the week.

You can expect to dedicate a minimum of 20 hours for your pilot certificate.

The three major types of hire/training are:

private hire (all private hire requires a .5 check flight before initial hire)

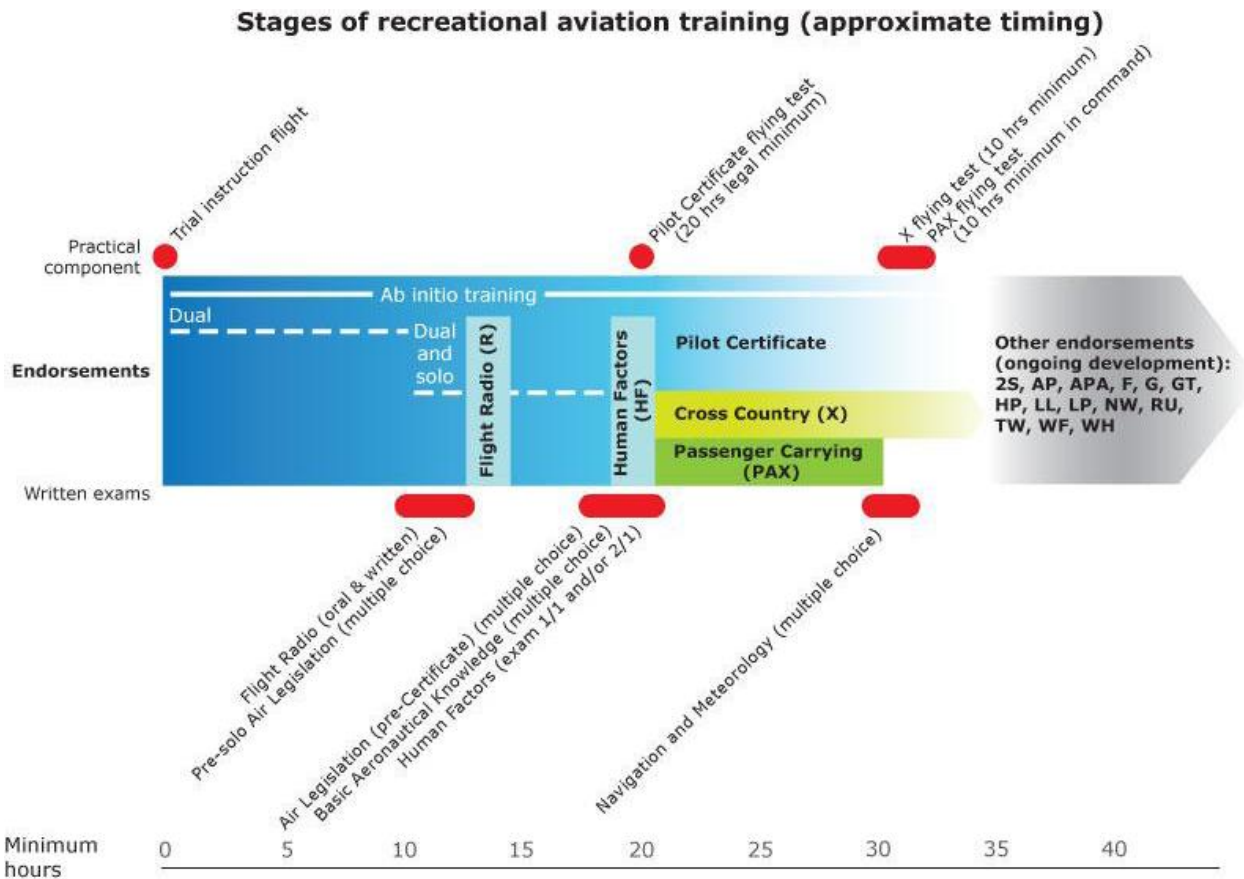
training in club aircraft - \$240ph (\$230 ph with 5 hour prepurchase)

training in your aircraft with your fuel - \$80ph (\$70 ph with 5 hour prepurchase)

Training instructional flight (TIF) - 20 minutes - \$95

OUTLINE OF YOUR FLIGHT TRAINING

The outline below describes the stages of your training and minimum times required to be eligible to progress to the next training stage.



At the moment the diagram may seem confusing, but your instructors at the Top End Flying Club will guide you along each step of the way, with all training, materials and exams provided in house.

DETAILED COSTS

The trial instruction flight is a good, cheap way for you to see if learning to fly is something you'd like to do. For \$95 you can go for a fly and take the controls yourself with the help of your instructor of course!

Each initial lesson will start with a ground briefing of about 20 minutes and a flying lesson of around an hour. Costs involved are \$240 for an hour's flight time, or \$1150 for 5 hours purchased in advance.

Recreational Aviation Australia (RA-Aus) is our governing body and to fly you will need to become a member. We will issue you a temporary membership which will cover you for the first 3 hours of training, and organise the paperwork for your year long RA-Aus membership as well as your Top End Flying Club membership. RA Membership costs \$185 a year and includes your Student Pilot Certificate, third party insurance cover, Operations and Technical Manuals, and 12 months subscription to the monthly Sport

Pilot magazine. Membership to the Top End Flying Club costs \$120 per year and helps support the maintenance of the facilities you use to learn to fly like the airstrip and clubhouse along with utilities.

So to recap...

The three major types of hire/training are:

private hire (all private hire requires a .5 check flight before initial hire)

training in club aircraft - \$240ph (\$230 ph with 5 hour prepurchase)

training in your aircraft with your fuel - \$80ph (\$70 ph with 5 hour prepurchase)

Training instructional flight (TIF) - 20 minutes - \$95

PAYMENT FACILITIES

Our preferred method of payment is via our online banking system. Eftpos facilities are not available at the airfield. Our bank details are:

Top End Flying Club

Bank - Westpac

BSB - 035302

Account Number - 210679

FLIGHT BOOKING

We use an online booking system to book your training time. This ensures that your time isn't wasted with aircraft that are undergoing maintenance or an instructor who is booked out with another student. We need your email address to enter into the system and you will be able to book and view your training bookings online.

It is important that you have an initial meeting or conversation with an instructor before making a booking.

If you haven't spoken to or contacted one of our instructors at TEFC, please email them with a brief outline of your flight experience and what you are looking for... aircraft hire, training, endorsement, BFR, TIF...

Bernie Wyndham berniewyndham@msn.com

Caleb Gotts caleb@candrconstructions.com.au

Steve Robinson drshrmd@yahoo.com

Depending on how often you are looking at flying from MKT, we also require that you join the Top End Flying Club as we are about fostering aviation in the community and our volunteers/members provide support and maintenance to the infrastructure at MKT.

Membership fees and details are located at <http://tefcnt.weebly.com/membership-enquiries.html>

If you provide your email it is added into our blog and feel free to unsubscribe although the postings are very infrequent.

HOW TO BOOK USING GOBOKO OUR BOOKING SYSTEM.

To sign into Goboko and manage bookings, go to <http://www.goboko.com/ORSignon.aspx?s=147>

Your sign in is your email and your password is **runway** or **Runway** unless I have advised otherwise. You can change this password in your profile. Contact me via email if you have problems signing in.

We recommend you opt in for booking emails...

E-mail Opt-ins

Probably worth checking this in your profile to receive confirmation emails

Booking e-mails	<input checked="" type="radio"/> Yes 	goboko has my permission to send me booking confirmation e-mails
	<input type="radio"/> No	
Group e-mails	<input type="radio"/> Yes	goboko has my permission to forward e-mails to me from my flying group or club
	<input checked="" type="radio"/> No	
System e-mails	<input type="radio"/> Yes	goboko has my permission to send me e-mails relating to the operation of the booking system
	<input checked="" type="radio"/> No	
Other e-mails	<input type="radio"/> Yes	goboko has my permission to send me e-mails that may be of interest to pilots
	<input checked="" type="radio"/> No	

Booking is:

1. Choose Calendar
2. Select the Training Jabiru
3. Select the date
4. When the day booking appears – scroll down and fill out the details
5. In the description field – if you haven't flown with us before, please enter what you want to do (TIF, Training, Aircraft Hire, Check Flight etc) and what your experience is – existing RA-Aus member with x hours on aircraft a,b – new to flying – GA with x hours etc
6. Click on the book button

1 **Top End Flying Club**

[Calendar](#) [Top End Flying Club](#) [Mark Christie](#) [Notice Board](#)

[Overview](#) [Year](#) [Month](#) [Week](#) [Day](#) [History](#) [Export](#)

2

Month's bookings for **Jabiru - Training Aircraft - Flying School** during May 2013

Calendar

May 2013 This Month

Reminders	Sunday	Monday	Tuesday	Wednesday	Thursday	Friday	Saturday
Add a reminder				1	2	3	4
▶	5	6	7	3 8	9	10	11
▶	12	13	14	15	16	17	18
▶	19	20	21	22	23	24	25
▶	26	27	28	29	30	31	

Quick booking: book all day on **8 May 2013** [Book](#)

© Copyright 2003 - 2013 goboko.com. Questions? Contact us at gobook@goboko.com

Top End Flying Club

Calendar Top End Flying Club Mark Christie Notice Board

Overview Year Month Week Day History Export

Bookings for Aircraft Jabiru - Training Aircraft - Flying School on Thursday 9 May 2013

Bookings

9 May 2013 Today

Local Time	Booking	Waitlist
7:00		
7:30		
8:00		
8:30		
9:00		
9:30		
10:00		
10:30		
11:00		
11:30		
12:00		
12:30		
13:00		
13:30		
14:00		
14:30		
15:00		
15:30		
16:00		
16:30		
17:00		

New Booking -

For Mark Christie

From 07:00

Until 18:00

Instructor

Provisional Yes No

Notes

Confirm by e-mail to All members who have opted in to booking e-mails

Book

4

5

6

You should receive an email from the instructor confirming the booking within 48 hours. If not, please follow up directly via email with the instructor.

Bernie Wyndham berniewyndham@msn.com

Caleb Gotts caleb@candrconstructions.com.au

Steve Robinson drshrmd@yahoo.com

EXAMS

There are a few exams to pass along the way, but don't worry, your instructor is there to help you. Before your first solo flight you will sit both the Pre-solo and the Radio use exam, and before your licence checkride you will sit an Air Law exam, a Human factors exam and a Basic aeronautical knowledge exam.

After completing the lessons and reaching the safe standard needed you will be able to get your Pilot Certificate with us. This will let you hire the plane by yourself within the vicinity (25 Nautical miles) of MKT.

Like to go further? After completing the navigation ground and flight training with us (of a minimum of 10 hours) and passing the checkride the sky is the limit, allowing you to hire the plane and go anywhere you like!

After 10 hours of solo time enjoying your new found freedom, by adding a passenger carrying endorsement to your licence you will be able to take friends and family up with you so they can enjoy flight as much as you.

WHO CAN FLY?

Anyone is able to start their flight training at **the Top End Flying Club** provided they are at least 15 years of age before their first solo and medically fit up to the standard to gain an Australian Motor Vehicle License.

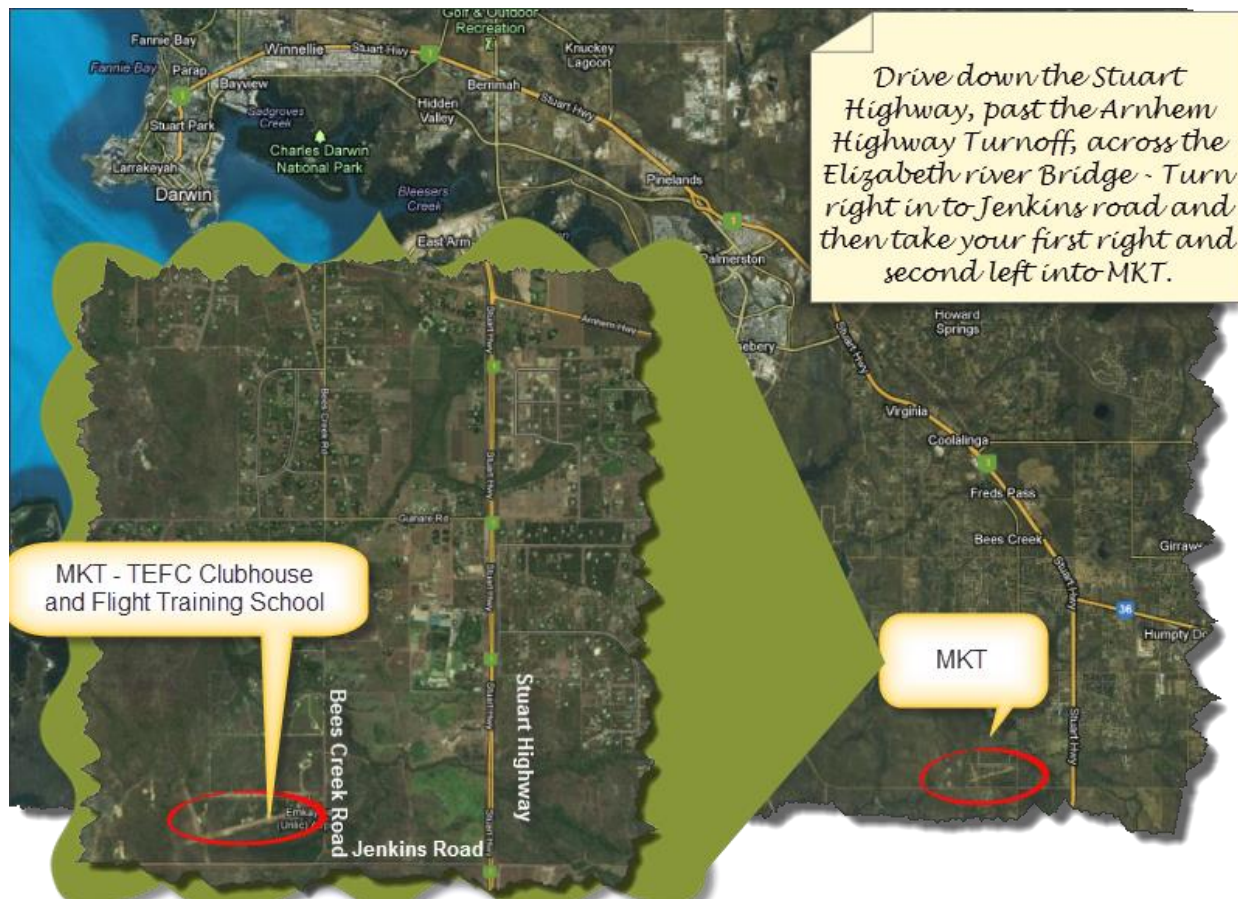
CONVERSION FOR HOLDERS OF A GA PILOT LICENCE

Holders of a current GA pilot licence (e.g. PPL, CPL, ATPL) are able to convert easily to the RA licence following a competency based checkride with our CFI and upon obtaining a RA-Aus membership.

LIKE TO KNOW MORE?

Simply contact us at the Top End Flying Club on Phone Number 0457992425 or visit our website at www.tefc.com.au.

We are located 45 minutes south of Darwin along the Stuart at MKT airfield on Jenkins Rd, Noonamah.



Our Airfield is located off Bees Creek Road...

Head down the Stuart Highway, continue past the Arnhem Highway turnoff and cross the Elizabeth River bridge where you will see traffic lights. Turn right at the traffic lights into Jenkins Road and proceed for 1.6 km.

Turn right onto the dirt road (Bees Creek Road) and continue for 600 metres where you turn left. There is a left turn at about the 500 metre point, please ignore that.

Once you have turned into MKT proceed slowly 10kmh to the clubhouse which is 300 metres from the entrance to MKT. There will be a red and white drifter aircraft parked under a roof in front of the club house.

Parking is located on the eastern side of the clubhouse.



